



Steer 750 Herbicide

750 g/kg quinclorac



TURF
culture

www.turfculture.com.au



For the post-emergence control of Summer grass and White Clover and the suppression of Kikuyu in turf

Steer 750 Herbicide

Technical Brief

- Active Ingredient:** 750 g/kg quinclorac
- Chemical Family:** Quinoline carboxylic acids
- Mode of Action Group:** I
- Formulation:** Water Dispersible Granule (WDG)
- Mode of Action:** Disruptors of plant cell growth (Synthetic Auxins)
In broadleaf plants, it is auxin-like; in grasses, it affects cellulose biosynthesis.
- Behaviour in Plants:** Readily absorbed by roots, shoots and foliage. Translocated throughout the plant to interfere with plant growth and cellulose production. The control symptoms exhibited by broadleaf weeds include leaf and stem curl or twisting, and chlorosis. Susceptible grasses demonstrate stunting, chlorosis and gradual reddening followed by necrosis and death.

Benefits

- Robust post-emergent control of Summer grass & White Clover
- Effective suppression of Kikuyu
- Excellent safety on a wide variety of turf species
- Low poison schedule (Schedule 5 - CAUTION)
- Can be tank-mixed with a number of herbicides to increase the spectrum of weed control

Weed Management

Situation	Weeds Controlled	Rate	Critical Comments
Established turf of: Common couch (<i>Cynodon dactylon</i>), Hybrid couch (<i>Cynodon dactylon</i> x <i>C. transvaalensis</i>), Japanese lawngress (<i>Zoysia japonica</i>), Marine couch (<i>Sporobolus virginicus</i>), Perennial ryegrass (<i>Lolium perenne</i>), Bent (<i>Agrostis stolonifera</i>), Kentucky Bluegrass (<i>Poa pratensis</i>) See also 'Protection of crops, native and other non-target plants' section.	Summer grass (<i>Digitaria</i> spp.)	1.1 kg/ha in 400L of water	One application: Weeds at cotyledon stage up to prior to second tiller OR weeds at 5 tillers and greater. Two applications: 21 to 28 days apart: Weeds from 2 to 4 tillers. The addition of a crop oil adjuvant may improve weed control in unfavourable weather conditions.
	Kikuyu (<i>Pennisetum clandestinum</i>) (Suppression only)		For Kikuyu suppression, apply twice, 14 to 21 days apart. Best results are gained from Autumn applications. The addition of a crop oil adjuvant may improve weed control in unfavourable weather conditions.
	White Clover (<i>Trifolium repens</i>)		Apply to actively growing weeds.

Note: The above table represents only a modified extract from the full registered label. Always read the full product label before use.

How to get the most out of your application

- Apply the product in 400 L of water/ha.
- It is recommended not to mow 2 days before or after applying Steer 750 Herbicide to maximise weed control.
- Clippings from the first three mowings after an application should be left on the treated area.
- Summer grass: Timing of the application is important for control. Only a single application is required from emergence prior to 2 tillers and from 4 tillers onwards. A double application, made 14 – 21 days apart, is required from the 2 – 4 tiller stage to achieve control.
- Kikuyu suppression: apply twice, 14 to 21 days apart. Best results are gained from Autumn applications. The addition of a crop oil adjuvant (**preferably a methylated seed oil**) may improve weed control.

Measuring Guide

The best way to measure Steer 750 Herbicide is by using weighing scales, however if you do not have scales, you can use a liquid (volume) measuring container.

Steer 750 Herbicide has a bulk density of 0.70 (when tapped 5 times); from this a volume measurement can be calculated and used as a guide.

See bulk density guide below:

Steer 750 Herbicide	Volume measured
100 g	143 mL
250 g	357 mL
500 g	714 mL
550 g	786 mL
700 g	1000 mL (1 L)
750 g	1071 mL
1000 g (1 kg)	1429 mL
1100 g (1.1 kg)	1571 mL (1.57 L)

Pour the product into the liquid measuring container, then tap the base of the liquid measuring container 5 times on a hard surface to allow the product to settle. Then ensure the product is flat and level in the measuring container to ensure an accurate volume reading.

Restraints

Clippings from the first three mowings should be left on the treated area.

DO NOT apply into any ornamental bed.

DO NOT apply when weeds are not actively growing.

DO NOT apply if heavy rain is expected within 48 hours, or within 8 hours prior to irrigation.

DO NOT apply this product through any type of irrigation system.

DO NOT apply to golf course collars or greens.

DO NOT apply within 4 weeks after seedling emergence of Kentucky Bluegrass, Creeping Bentgrass and Perennial Ryegrass.

Mixing and Compatibility

MIXING

To ensure even mixing, half-fill the spray tank with clean water and add the required amount of product. Agitate thoroughly, then add the remainder of the water. Agitate again before spraying commences. The addition of a crop oil adjuvant (**preferably a methylated seed oil**) may improve weed control in unfavourable weather conditions.

Note: Add the required quantity of Steer 750 Herbicide directly to the tank water, DO NOT mix with water through a filter basket. DO NOT make a slurry or paste prior to adding to the tank. Maintain agitation at all times – from mixing to spraying (including spraying times).

COMPATIBILITY

The product is compatible with DSMA, Turf Culture Trinex 250 EC Growth Regulator and Turf Culture Trinex 120 ME Growth Regulator.

Turf Safety

Transient discolouration may occur on Bent grass and Hybrid couch (i.e. Santa ana), which may last for a period of at least 20 days. It is recommended that small areas be tested for turf safety before large-scale application occurs. Avoid exceeding application rates through overlapping sprayed areas.

DO NOT apply to Bahia grass (*Paspalum notatum*), Centipedegrass (*Eremochloa ophiuroides*), Buffalo grass (*Stenotaphrum secundatum*), Kikuyu (*Pennisetum clandestinum*), Qld Blue Couch (*Digitaria didactyla*), Carpet grass (*Axonopus* spp.) or lawns or turf where desirable clovers are present.

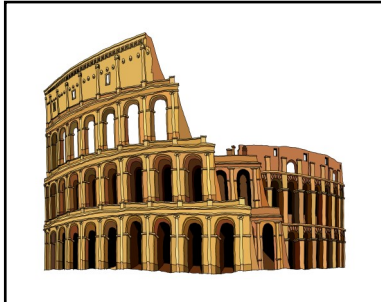
Packaging

Pack size: 2 kg



Steer 750 Herbicide

Turf Culture has many more products, such as:



Coliseum

Herbicide

For the control of Winter grass (*Poa Annuua*) and Ryegrass in Common & Hybrid Couch Turf



Silverado

Herbicide

For the control of Moss and Broadleaf Weeds in Golf and Bowling Greens and Turf Farms



Thumper

Insecticide

For the control of Couch Mite and Nematodes in Turf

For a full product listing go to our website: www.turfculture.com.au



All of Turf Culture's products come with a formulation guarantee, ensuring turf managers can be extremely confident they are applying a quality product.

TURF
culture



" Innovative & Professional Turf Products "

www.turfculture.com.au

Steer 750 Herbicide

Phone: 1300 11 8873 (Ph: 1300 11 TURF)